

CU NewsLine



Make Your Summer #Amazing

Summer Loan rates as low as 5.99% APR* for 24 months

Go on a dream vacation, improve your home, or whatever you want to make this summer unforgettable!



*APR=Annual Percentage Rate. Rates, availability, terms and conditions are subject to change and will vary based on creditworthiness. All loans subject to approval. Additional restrictions may apply. Cannot be combined with any other offer. Summer Loan offer valid June 1, 2018 – July 31, 2018. Proof of income will be required before funding of loan. Monthly payment on \$3,000 for 24 months payments at 7.99% APR is \$136.11. This payment example is for illustration purposes only. Your actual payment may vary. Membership eligibility requirements and membership fees may apply. Rates and terms are subject to change without notice.

IN THIS ISSUE:

- CEO Corner Office
- Homeownership Workshop
- Summer Loan Offer
- Summer Auto Loans Offer
- Youth Savings Accounts
- Credit Union Car Sales Event
- \$750 Cash Back Mortgage
- Annual Meeting Details

HOLIDAY CLOSURES

Memorial Day
Monday, May 28th



CEO Corner Office

Discover the Science of Saving

April is National Credit Union Youth Month, and Long Beach City Employees Federal Credit Union encourages kids to explore *the Science of Saving*. No textbook required!

It's never too early to talk to your kids about saving for their future. Simple, teachable moments are everywhere. Talk to them about saving their money for their next purchase, whether it's a toy they want or a video game. Suggest to them putting aside a portion of their allowance on a regular basis so they can watch it grow. Get them into the habit of not spending all their money right away.

Also, include them in your budgeting. Discuss what your financial goals are and ask them for ideas on how, as a family, you can reach those goals. Perhaps you can give them a budget of their own as well.

The Credit Union wants to be a part of your kids' financial future. That's why we're offering a free gift and a chance to win tickets for four to Discovery Cube Orange County and a \$100 Visa Gift Card when you open a savings account for your child.*

Show your kids the *formula* for financial success! Happy saving!

Kathleen O'Connell
Chief Executive Officer

*Please see a member service representative or visit lbcefcu.org for full details about our promotion and raffle.

Back by Popular Demand!

Are you on track to buy the home of your dreams?

Gain a better understanding of your credit and the attributes that make up a credit report
Learn the steps to take on your path to home ownership
Learn how the components of the home purchase process all tie together
...and more

Roadmap to Homeownership Workshop
Saturday, May 19, Registration at 8:30am
2801 Temple Ave., Signal Hill

YOU'RE INVITED!



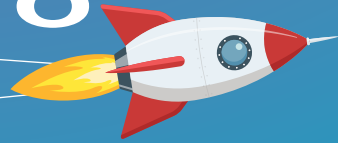
81st Annual Meeting

We invite you to join us for a brief business meeting that will include the financial statements as of December 31, 2017 as well as the results of the Annual Election. Additionally, we will have some yummy food and beverages plus door prizes for our Credit Union members. We'll see you there!

Wednesday, May 2 at 5:15pm
Long Beach Gas & Oil Dept.,
2400 E. Spring St., Long Beach, CA 90806

The Science of Saving

Family Fun Days



Win 4 Tickets to



DiscoveryCube

and a \$100
Visa Gift Card!



Get a free raffle entry when you:

Open a savings account for your child with a deposit of \$25 or more

Set up payroll deduction to a youth account

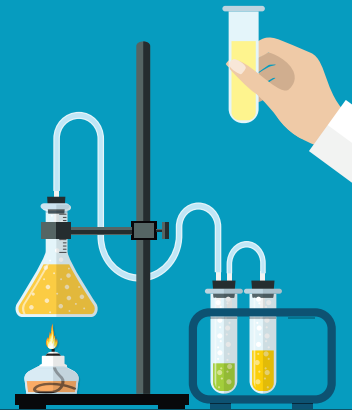
Deposit \$10 or more into a youth account using our coin machine

FREE
Piggy Bank

when you open
a savings account
for your child

*cash not
included

No purchase necessary. See a representative for full rules and details. All raffle entries must be received by close of business, Monday, April 30, 2018. Grand prize drawing will be held May 1, 2018. Winner will be contacted by phone and must claim their prize in person with proper identification. LBCEFCU employees, volunteers, and family members are not eligible for the grand prize drawing. May not be combined with any other offer. Limit one entry per qualifying method per youth account. Subject to change without notice. Offer valid April 1, 2018 to April 30, 2018.



THE RIGHT MORTGAGE
IS WAITING FOR YOU,
AND SO IS

\$750
CASH BACK

Apply for a new home mortgage or refinance your existing home loan, and receive **\$750 cash back** after funding when you:

- Enroll in automatic mortgage payments from your Long Beach City Employees Federal Credit Union personal checking account
- Enroll in paperless eStatement

Offer ends 7/31/18



Call Us

562.595.4725 x2096



Apply Online

www.lbcefcu.org



Visit the Branch

\$750 Cash Back: Members get \$750 Cash Back after the funding of a purchase mortgage or refinance mortgage loan with Long Beach City Employees Credit Union (Credit Union). This offer is available for residential first mortgage loans only, submitted directly to the Credit Union between April 1, 2018 and July 31, 2018. To be eligible, a member must: (1) Have an existing or open a new Credit Union checking account (2) Enroll in automatic mortgage payment service. With this service, mortgage payments will be automatically deducted from a Credit Union checking account. Payments must go directly from a Credit Union checking account to the Credit Union mortgage and not be managed by third parties, and (3) enroll their Credit Union account in the eStatement service offered by the Credit Union. All promotion requirements must be met within 60 days of funding. This offer is available to new and existing members of the Credit Union and only to members residing in California and on member primary residences (single-family, owner occupied detached dwellings, condos or townhomes). Upon a member's enrollment in the services indicated above, the Credit Union will review the account to ensure all eligibility criteria have been met. This offer is not transferable, is limited to one per member at any given time, and may be discontinued at any time without notice. The \$750 Cash Back Promotion may result in reportable income on Form 1099-INT to the member and the IRS. We encourage members to consult with personal tax advisors. All home lending products are subject to credit and property approval. This offer is available to new and existing members of the Credit Union and only to members purchasing or refinancing homes in California and that are the primary residences of the member. (Single-family, owner occupied detached dwellings, condos or townhomes). Rates, program terms and conditions are subject to change without notice. Other restrictions and limitations apply. Promotion ends July 31, 2018 and loans must fund by 8/31/2018.

Hot Summer Auto Loans

Rates as low as **2.24% APR*** with no payments for 90 days**
and a free \$100 Gas Card

What are you waiting for?



*Annual Percentage Rate. LBCEFCU rates for our auto loan programs feature a range of rates. Actual rate member will receive is determined by a combination of credit, income and loan to value (LTV) factors. All auto loans must meet collateral and LTV requirements. All loan requests are subject to credit approval and loan rates are based on creditworthiness. Contact LBCEFCU to determine your rate. See branch for full offer and other disclosures. Rates and terms subject to change at any time. \$100.00 Gas Card is valid for new or used auto loans originated with LBCEFCU during the promotional period. Existing LBCEFCU auto loans do not qualify for this promotion. No other promotional discounts apply. Additional restrictions may apply. Offer ends 7/31/18. Prospective Members: A \$5 membership deposit is required to open a share account. A share account is required if approved for a loan. Loan Payment example: \$17.74 per month per \$1,000 borrowed at 2.49% APR for 60 months. **Payment can be deferred for 90 days, however, interest will accrue from the date loan is originated and funded.

— SAVE THE DATE —

Credit Union Car Sale

Friday, June 1 – Sunday, June 3

Enterprise Car Sales Lot

3384 Cherry Ave., Long Beach



BOARD OF DIRECTORS

Terry Evans, Chairman of the Board
Malcolm Oscarson, Vice Chairman
John Kruse, Secretary/Treasurer
Beverly Bartlow-Nieves, Director
Amy Manning, Director
Paul Fujita, Director
Pat Burns, Director

SUPERVISORY COMMITTEE

Ed Nelson, Chairman
Jeff Evans, Vice Chairman
Linda Vu
Eugene Fong
Julissa Jose-Murray
Alan Kosoff, Advisory Member
John Keisler, Advisory Member

OFFICE HOURS

Monday - Thursday:
8:30am to 5:00pm
Friday:
8:00am to 6:00pm

2801 Temple Ave.
Signal Hill, CA 90755

www.lbcefcu.org
562.595.4725



Federally Insured by NCUA