

LONG BEACH CITY EMPLOYEES FEDERAL CREDIT UNION

CU NewsLine



Start Saving for Their Future ScholarShare 529

Start saving for your child's higher education with a flexible and tax-advantaged savings plan.



100% tax-free growth



Less than half the average expenses of other 529 plans



Financial-aid compatible



Range of investment options



Use for wide range of higher education expenses and programs including trade school

Consult a Member Service Representative to get started today!



HOLIDAY CLOSURES

Martin Luther King Jr. Day:
Monday, January 15
Presidents' Day:
Monday, February 19

IN THIS ISSUE

ScholarShare 529 Plan
Launch of PaymentZ
Person-to-Person Payments

Your CU Crew Activities
Upcoming Financial Workshops
Nominating Committee Report

Quarter 1
2024

CEO Corner Office

PaymentZ: A Vision Come to Fruition

In December 2023, we proudly launched our new online payment system, PaymentZ within online banking. This new system offers advanced features that are superior to what major banks offer. We are excited about PaymentZ and hope you will discover and enjoy its unique features.

PaymentZ would not have been possible without our Chief Information Officer, Autumn Hoffman, who passed away in December of 2022. Autumn was an advocate for credit unions. Her vision for credit unions, including ours, was to advance technology that would allow credit unions to compete and surpass what banks could offer while maintaining the personal service for which we are known.

Autumn was hard at work implementing PaymentZ when she left us suddenly. This was her passion project, and she fiercely believed in the value it will bring to our members. The Credit Union team united to continue her legacy, taking over the project together. We are thrilled to make Autumn's vision a reality.

Over the next few months, you'll learn more about PaymentZ and how it can simplify your life. We will have workshops and tutorials to help you make the most out of this system. But for now, we would like to take a moment to remember Autumn and her many contributions to the Credit Union.



Kathleen O'Connell
Chief Executive Officer

Upcoming Workshops

PaymentZ — The Easier Way to Pay

ScholarShare 529 Accounts

Trust Accounts

Credit Card Makeover

Visit LBCEFCU.org for schedule and registration information



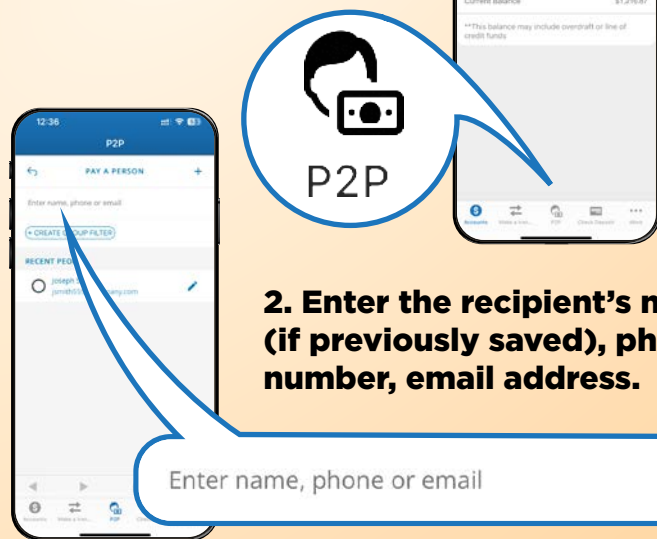
Member workshops may be provided by non-affiliated third parties on behalf of the Credit Union as a member benefit. The Credit Union is not responsible for the products, services, or recommendations provided by workshop facilitators. Information presented is for informational purposes and should not be construed as legal or tax advice.

Discover How Easy it is to Send Money With

PAYMENTZ

Sending money to another person is easy with PaymentZ!

1. Tap the P2P Button in your Mobile Banking app.



2. Enter the recipient's name (if previously saved), phone number, email address.

Enter name, phone or email

3. Create a security question and give the answer to the recipient (only needed once).

SECURITY QUESTION

Question

What is my favorite color?

Answer

Green

PAY

4. Enter the amount to send and click Pay.

5. The recipient receives a text or email message notifying them of the payment.

LBCEFCU: Tom Roberts sent you \$20.00. Use this link to provide your payment information so we can deposit your money.

6. The recipient simply clicks the link, enters the answer to the security question and their bank details, and the money is deposited into their account!

No apps to download!
(for the recipient)

The bank details are saved so the recipient doesn't need to enter that information again in the future.

Discover Other Features of PaymentZ



Transfer Funds to Another Bank Account

Upgrade Online Bill Pay and eBills



Learn More at
lbcefcu.org



Your Credit Union team members give back to employees of the cities of Long Beach and Signal Hill! They can be found around town helping out at City events.

We were on hand with Long Beach Management Association to help prepare their dinner for the families staying at the Ronald McDonald House (RMH). Their Toy Drive for RMH at Dave & Busters was a huge success!



rol / Spark of Love Toy Drive

We assembled gift bags with the Long Beach Police Department and Long Beach Fire Department for their annual Toy Patrol / Spark of Love Toy Drive. We supported the employees and volunteers in collecting toys for deserving children in the community.

And we helped wrap hundreds of gifts for City Employees at our annual Holiday Gift Wrap events around the city. We visited City Hall, the Port of Long Beach, Emergency Operations Center, LBPD Headquarters, DHHS Headquarters, and LB Utilities!



Ronald McDonald House Toy Drive at Dave & Busters



Holiday Gift wrap

Nominating Committee Report

Long Beach City Employees Federal Credit Union will have three 3-year term vacancies on the Board of Directors in 2024. The nominating Committee has nominated three qualified candidates to fill the position. The nominees for the 3-year terms are Beverly Bartlow-Nieves, Pat Burns and Jeff Evans.

Additional nominations are allowed by petition. To be nominated by petition, a candidate must obtain the signatures of 1% of the membership of the Credit Union and submit a candidate resume stating qualifications for the position. Completed forms must be submitted to the Secretary of the Board of Directors in a sealed envelope to 2801 Temple Avenue, Signal Hill, CA 90755, no later than close of business, Friday, February 23, 2024. To request petition forms, instructions and required qualifications, contact the Credit Union office.

BOARD OF DIRECTORS

Beverly Bartlow-Nieves, Chairman
of the Board
Pat Burns, Vice Chairman
Jeff Evans, Secretary/Treasurer
Malcolm Oscarson, Director
Ana DeAnda, Director
Brandon Walker, Director
Rachel Rock, Director

SUPERVISORY COMMITTEE

Ed Nelson, Chairman
Aida Honey, Vice Chairman
Alan Kosoff
Matt Heady
Omar Ramos
Rocio Pfingsthorn, Advisory Member
Robert Pfingsthorn, Advisory Member

OFFICE HOURS

Monday - Friday:
9:00am to 5:00pm

BRANCH LOCATION

2801 Temple Ave.
Signal Hill, CA 90755

www.lbcefcu.org

562.595.4725



NMLS #525616



Federally Insured by NCUA